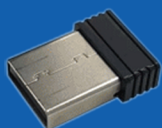


# ANSWK



## BT5700

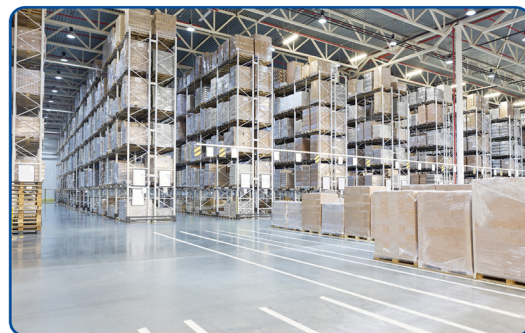
### ANSWK® 2D Cordless Handheld Barcode Scanners

#### FEATURES

- Minimum resolution: 4 mils.
- Motion tolerance is 2M/Sec.
- 300,000 pixels, global shutter.
- Quick recharging, 8-10 hours of continuous scanning.
- IP52 ensures high reliability and durability.
- Easily read some paper, plastic, mobile phones, LEDs, etc., and even high-precision, wrinkled, damaged, or poorly printed barcodes.

#### Product Maintenance Tips

- The reading window must be kept clean;
- Avoid hard and rough objects to wear or scratch the reading window;
- Use a brush to remove stains on the reading window, please use a soft cloth to clean the window, such as glasses cleaning cloth;
- It is forbidden to spray any liquid on the window;
- It is forbidden to use any cleaning agents other than clean water.



## Decoding Capability

### 1D/ 2D codes on paper or screen

**1D CODES** All standard 1D codes, including GS1 DataBar™ linear code can be automatically distinguished and decoded.

**2D CODES** Aztec Code; Data Matrix; MaxiCode; QRCode; HANXIN; MicroQR Code  
Stack code: GS1 DataBar Expanded Stacked; GS1 DataBar Stacked; GS1 DataBar Stacked Omnidirectional; GS1 DataBar Composite; MicroPDF417; PDF417.

## Electrical

**Input Voltage:** 5 VDC (+/- 10%)/500mA

**Current:** Working current (Standard): < 270 mA

Standby current(Standard): < 35 mA

## Environmental

**ESD protection(Air discharge) :** 8 kV

**Ambient light: Indoor:** 0 to 6,000 lux; **Outdoor:** 0 to 86,000 lux

**Operating Temperature:** 0°C to +40°C

**Storage Temperature:** -20°C to +60°C

**Humidity:** 5% to 95%, non-condensing

**Protection Ratings:** IP52

**Drop resistance:** Withstands repeated drops from 1.2m/4.0 ft onto a concrete surface.

## Cordless Parameter

**Cordless mode:** 2.4G or 2.4G+Bluetooth(optional)

**2.4G Transmission Distance:** 80 meters (basic on open space)

**Communication Mode:** Wireless real-time transmission/wired transmission/storage mode

**Battery Capacity:** 2000mAh

**Continuous Working Time:** 8-10H

**Charging Time:** 4.5H

## Interface

**Interface:** RS-232; USB HID; USB COM; HID POS available as per customer's needs

## Scan Performance

**Image sensor:** 640px\*480px

**Light Source:** White LED

**Minimum Symbol Contrast:** 20% minimum reflectance difference

**Resolution(Minimum) :** ≥0.102mm / 4mils

**Reading Angle:** Pitch: 0-360°; Roll(Tilt): ±60°; Skew (Yaw): ±60°

## Typical Depth of Field:

Precision	Barcode	Depth of Field
3.34mil	CODE 128	10mm—60mm
5mil	CODE128	5mm—90mm
3.34mil	EAN-13	10mm—55mm
5mil	EAN-13	5mm—85mm
13.34mil	EAN-13	20mm—190mm
5mil	PDF417	5mm—75mm
10mil	PDF417	5mm—190mm
15mil	PDF417	10mm—200mm
10mil	DM	5mm—100mm
20mil	DM	5mm—210mm

(The minimum depth of field is determined by the barcode length and scanning angle. It depends on the print resolution, contrast and ambient light.)

## Physical Characteristics

**Colors:** Black

**Dimensions:** 71\*107\*158mm

**Weight:** scanner 205g, cable(1.5m)

**Housing:** ABS+PC

**Indicator:** LED light&Buzzer(adjustable tone and volume)

**Operating Mode:** hand-actuated or auto-detaction

## Certifications

Certification: CE, FCC, etc.

## Warranty

Warranty: One year factory warranty

